

**GET
CONNECTED**
with the New **MATRIX Series 4** and
TAKE CONTROL





GET CONNECTED

with the New **MATRIX Series 4** and

TAKE CONTROL

MATRIX Series 4 helps you and your organization “Get Connected” with a host of new and exciting features.

State of the Art Control System with:

- Virtual Intelligence – any change in drawer configuration is automatically recognized and re-programmed
- Comprehensive remote & self-diagnostics for less down time
- The latest control processors and SMT technology
- 50% less electronic components
- Fully ROHS Compliant - environment friendly

Expanded MATRIX-TM software including:

- SAP interface
- Powerful Search engine – by text, image & product application
- Connectivity to external warehouses and multiple sites
- RFID compatible
- New Advanced reports to improve supply chain management, reduce spending and increase productivity





Control inventory, streamline purchasing and drive down costs. **MATRIX** combines the most innovative automated tool dispenser around with **MATRIX-TM** – a powerful management software.

MATRIX can store hundreds of different stock items in 1 compact cabinet - now that's clever!

MATRIX Versatility

Flexibility is the key to any storage solution, and **MATRIX** excels. **MATRIX** offers a variety of drawer and bin configurations that can be swapped in-out. Add-on cabinets are connected with the click of a cable. Multiple cabinets can be deployed in different locations and networked to run off of one common database. The **MATRIX** is a truly modular system that grows with you as your needs change.

Access to **MATRIX** is electronically controlled by the management software according to pre-defined authorizations.

MATRIX Technology

- Dual locking system
- Large touchscreen
- Plug & play “smart” electronics
- Ergonomic design

Bins and Drawers

Bin Code	B50-1	B50-2	B50-3	B50-4	B50-5	B75-2	B75-3	B75-4	B75-6	B75-7	B100-1	TOTAL BINS PER DRAWER	
Bin Dimensions mm (HxWxD)	50x48x56	50x98x56	50x148x56	50x198x56	50x248x56	75x98x56	75x148x56	75x198x56	75x148x88	75x198x88	100x48x56		
Imperial (HxWxD)	2.0x1.9x2.2	2.0x3.8x2.2	2.0x5.8x2.2	2.0x7.8x2.2	2.0x9.7x2.2	2.9x3.8x2.2	2.9x5.8x2.2	2.9x7.8x2.2	2.9x5.8x3.5	2.9x7.8x3.5	3.9x1.9x2.2		
Drawer Code	D50-0											0	
	D50-1	98										98	
	D50-2		49									49	
	D50-3		7	28								35	
	D50-4		7		21							28	
	D50-5				7	14						21	
	D75-0											0	
	D75-3						7	28					35
	D75-6							2	2	8	8		20
	D100-0												0
	D100-1											98	98

MATRIX Intelligence

- Sloped back ergonomic design for easy viewing of stored items.
- Double security – each drawer and bin is locked to prevent unauthorized use.
- Computer and electronic components are accessible from the front.
- Easy to transport.
- Manual override – so your production never stops even in cases of power failure.
- Barcode reader for quick and reliable issuing.
- New Jumbo drawers for extra large items.



THE FUTURE IS HERE

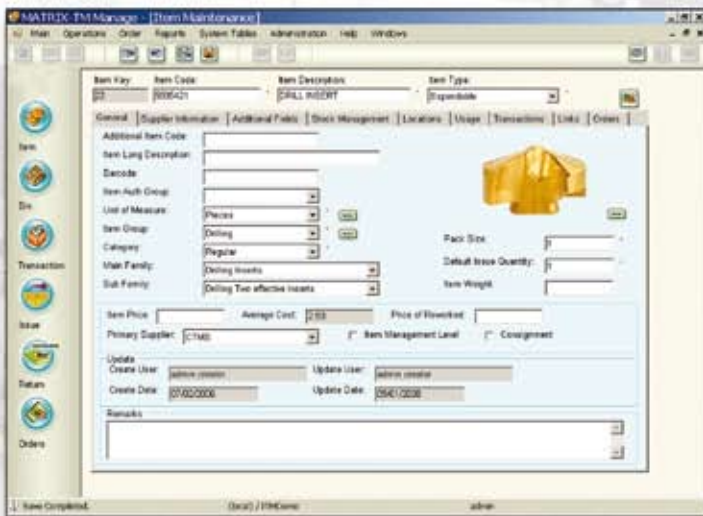


MATRIX-TM is a state of the art, fully featured software package that enables you to efficiently manage your entire stock of tools.

MATRIX-TM Modules

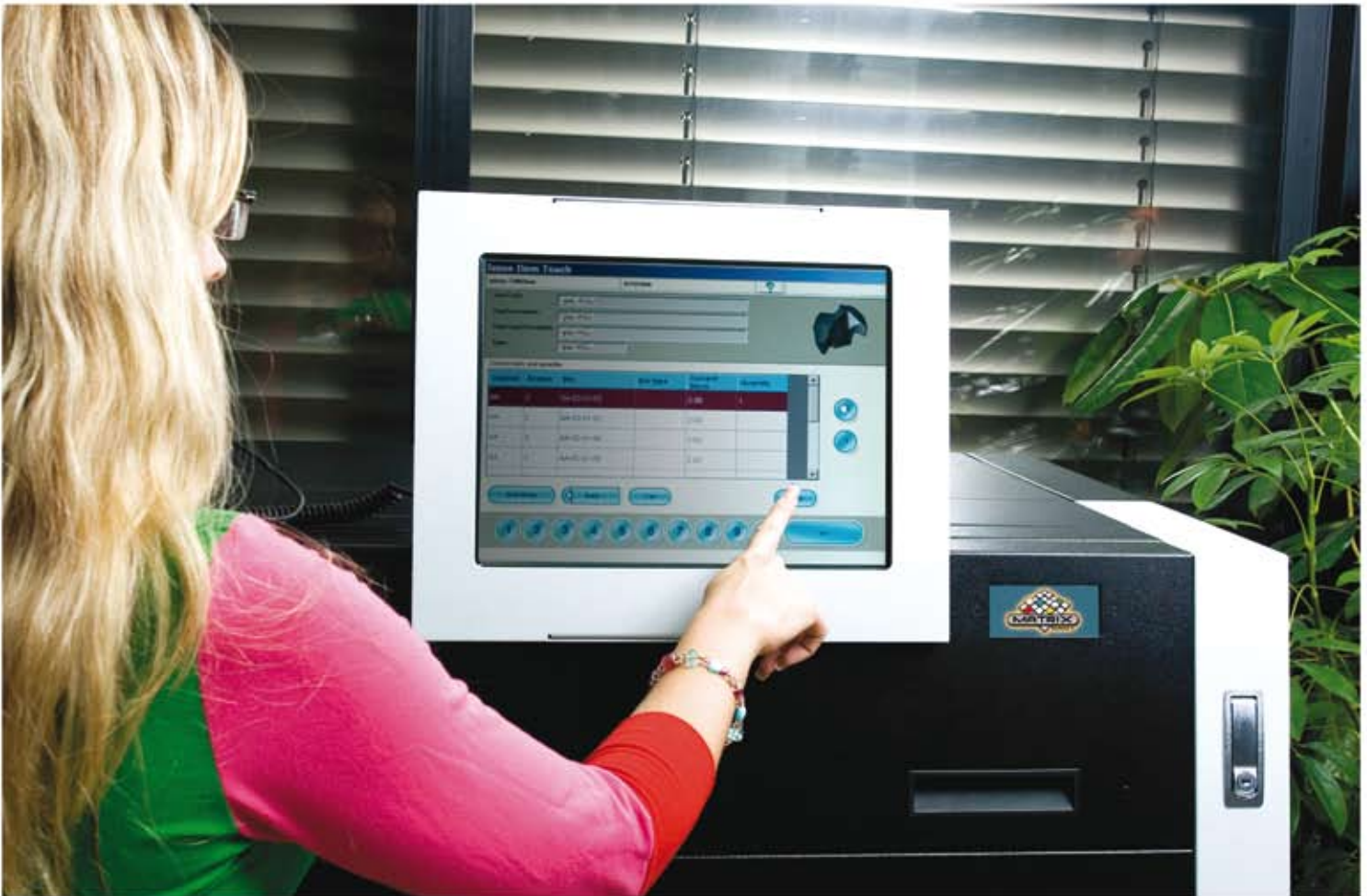
MANAGE - a comprehensive application for the management of your entire stock of tools.

TOUCH - an easy to use touch screen driven application which lets the user issue, return and maintain items stored in a **MATRIX** dispenser.





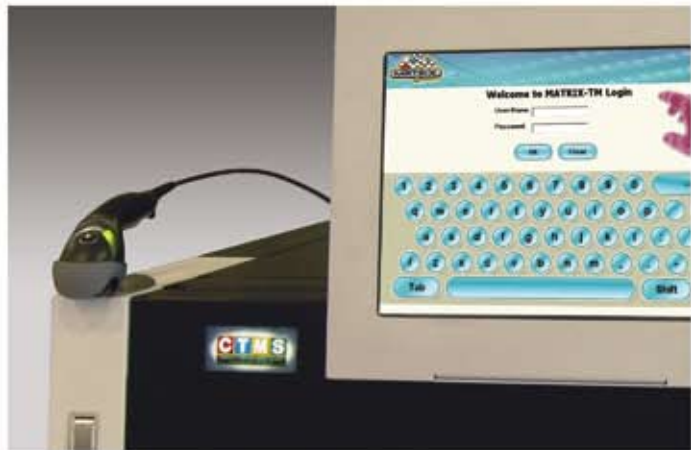
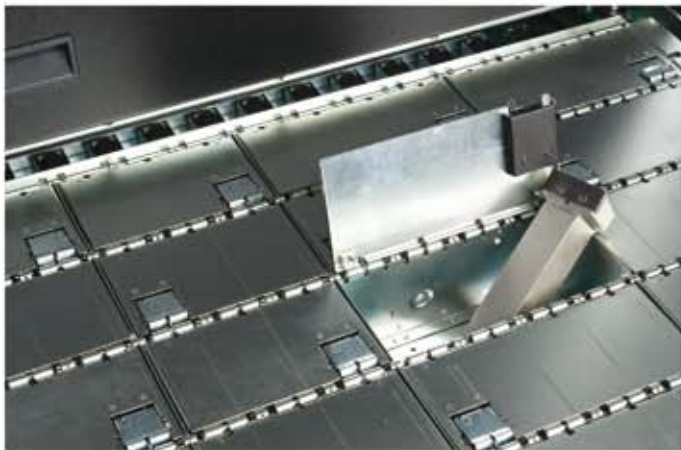
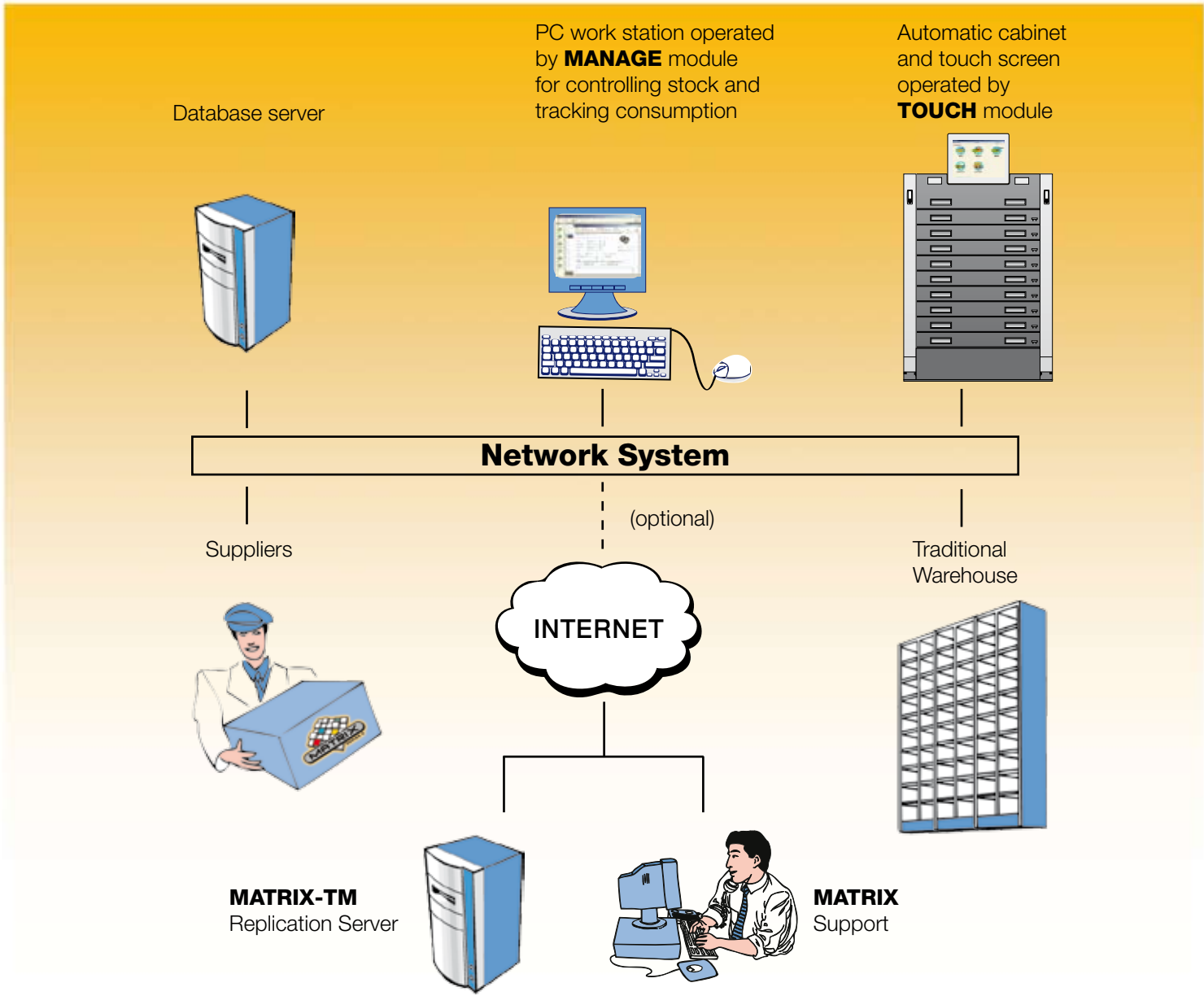
A HOST of BENEFITS

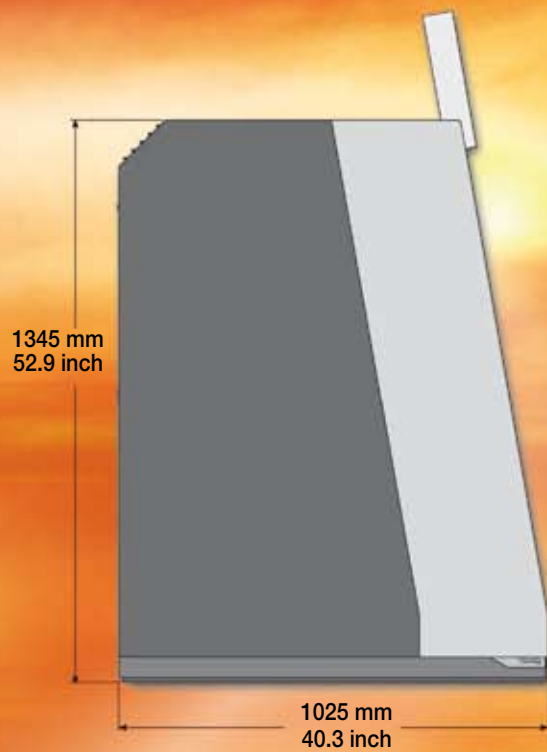
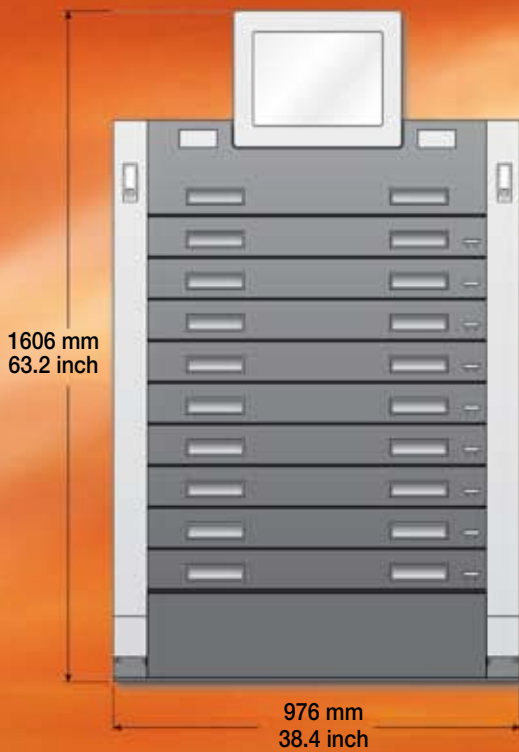


MATRIX-TM Features

- Full transaction history, by item, employee and cost code.
- Consumption statistics for better planning and cost reduction analysis.
- Automatic calculation of re-order points and purchasing.
- Multi-language user interface.
- Kit management to issue lists of items.
- Attach photos and documents to items.
- Manage items for rework.
- Create reports and graphs that can also be viewed by Excel or web browser.
- Create and schedule reports in a variety of formats such as XLS, XML, CSV and PDF that can be emailed, filed or used as a tool for integration with other systems.
- Import engine for receiving data from other systems.
- Database Administrator tool.
- MATRIX-TM has been developed with the latest technologies using Microsoft .Net 2005 Visual Studio.







MATRIX Technical Specifications

- Cabinet weight: approximately 630 kg (1389 lb), (subject to configuration).
- Cabinet includes floor mounting plate.
- Drawer heights (net): 50 mm, 75 mm and 100 mm, (2 inch, 2.9 inch and 3.9 inch).
- Drawers per cabinet: 6-9 (depending on height).
- Maximum load weight per drawer: 50 kg (110.2 lb).
- Drawer operating speed: 1 second (full extension).
- First cabinet (Master) is supplied with PC, 15" 5-wire touch monitor, power supply, UPS, barcode reader and management software.
- Add-on units are connected to the Master via 12V and network cables.
- Extendable up to 7 units including Master, per station.
- Electrical Supply: 110AC +/-20% 4.6A or 220AC +/-20% 2.2A.
- Supplied in top-quality industrial grade zinc coated steel.
- External colors: black & silver.
- Manufactured under ISO9001-2000.
- CE certified.



7861004

All rights reserved
01/2008

CTMS – Commodity and Tool Management Services
Division of IMC Group Tefen, Israel
matrix@ctms-imc.com, www.ctms-imc.com